

Planning
Committee Meeting

07 December 2021



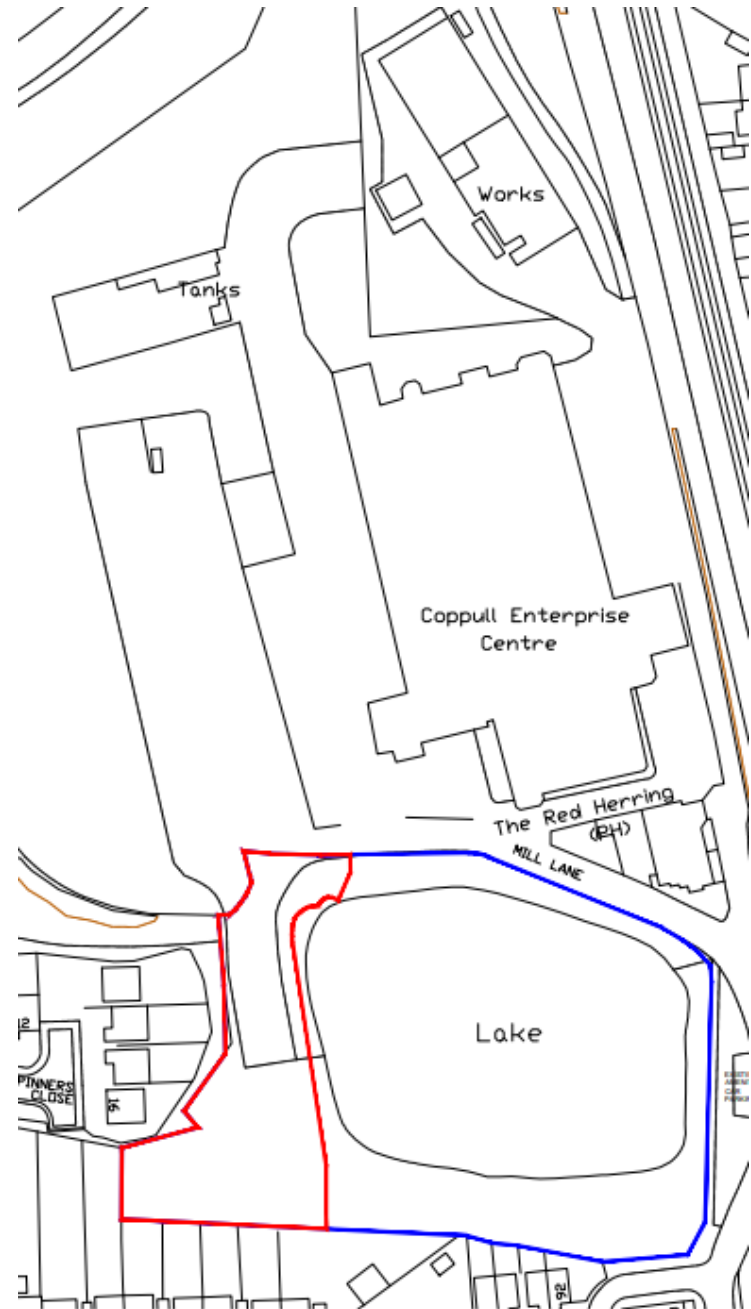
Item 3a

19/00251/FUL

Land To The Rear Of 13-16 Spinners Close,
Coppull

Erection of a building comprising 4no. apartments
and a building comprising 2no. bungalows with
associated parking and landscaping

Location Plan



Aerial photo



Site plan



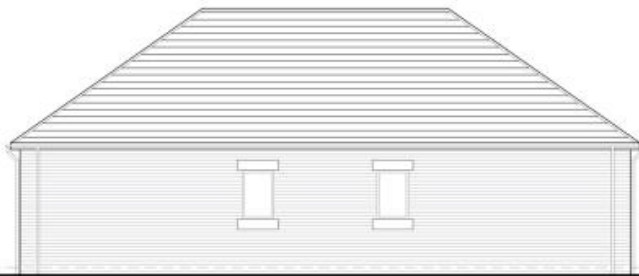
Elevations - Bungalows



Front Elevation



Side Elevation



Rear Elevation



Side Elevation

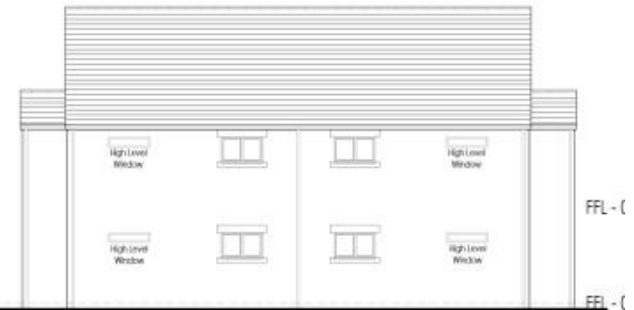
Elevations - Apartments



Front Elevation



(South) Side Elevation



Rear Elevation

Site photo



Site entrance



Site photo



Site from across pond



View across pond from site



View of Spinners Close from site



Site from rear of 13 Spinners Cl



Site from rear of 14 Spinners Cl



View towards rear gardens of 15 and 16 Spinners Close

